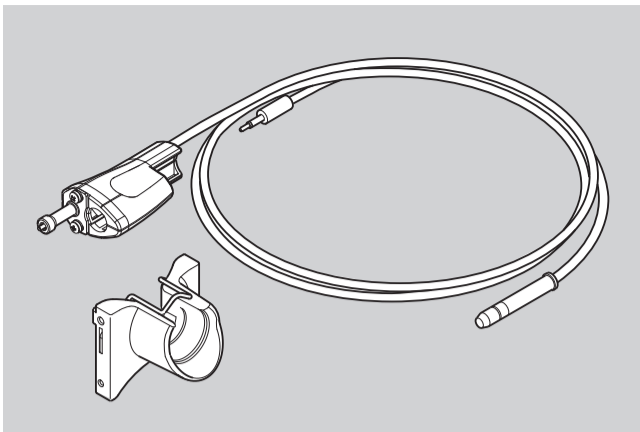


goot® TUBE ASSY FOR
AUTOMATIC SOLDER FEEDER
FD-100TA-1.0/1.6



INSTRUCTIONS

Thank you for buying the **goot** Automatic Solder Feeder **FD-100TA**. Please read these instructions before using your solder feeder.

NOTE This TUBE ASSY was developed for our **FD-100**. And these instructions are for the tube assy only. Please buy our **FD-100** as your solder feeder main unit, and refer to the **FD-100 OPERATION MANUAL**.

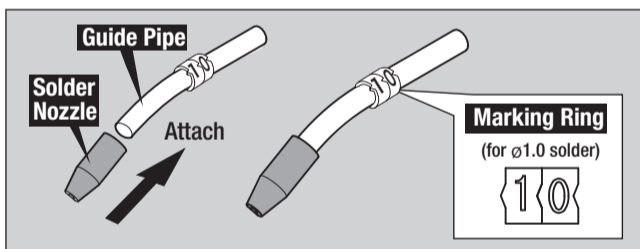
1. SAFETY MARK DEFINITIONS
2. FOR SAFE OPERATION
3. SPECIFICATIONS
4. PACKAGE CONTENTS / NAMES OF PARTS
5. SETTING
6. HOW TO USE
7. MAINTENANCE
8. REPLACEMENT PARTS / OPTIONS

TAIYO ELECTRIC IND.CO.,LTD.

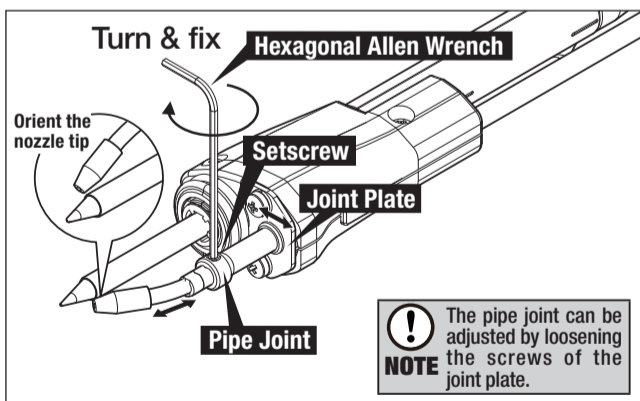
www.goot.co.jp E-mail: info@goot.co.jp

KEEP THIS MANUAL FOR FUTURE REFERENCE

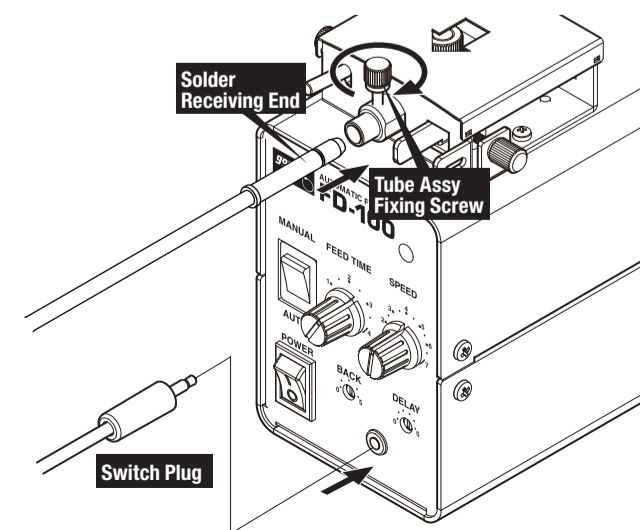
4. Put the solder nozzle on the guide pipe (both sold separately).
(The marking rings identify correct solder diameter. Please put them on the guide pipe.)



5. Insert the guide pipe into the pipe joint. Orient the nozzle tip & position, and fix the setscrew with a hexagonal Allen wrench (1.5mm).



6. Connect the receiving end and switch plug to the FD-100.



1. SAFETY MARK DEFINITIONS

In this manual, the following safety marks are used.

WARNING
Failure to obey a safety warning could result in serious injury or death to yourself or to others, or other damages.

CAUTION
Failure to obey a safety warning could result in injury to yourself or to others, or other damages.

NOTE A note or word of advice.

2. FOR SAFE OPERATION

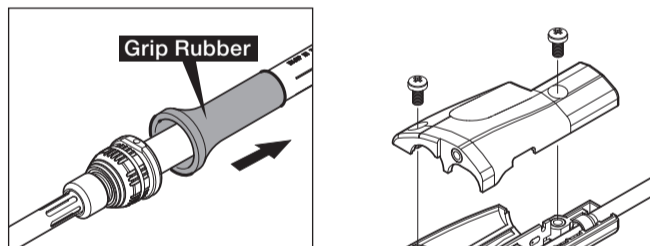
1. Handle with care to avoid burning yourself. Be sure that the tip has sufficiently cooled down before set-up.
2. Do not insert the switch plug anywhere except the goot solder feeder jack.
3. Do not touch the solder nozzle, guide pipe, or other metal parts, to prevent personal injury or burning yourself.
4. Use the correct tube size to prevent solder clogs.
5. To prevent solder clogs, do not fold the tube. Also, follow the minimum bend radius.

3. SPECIFICATIONS

MODEL	FD-100TA
Applicable Soldering Irons	RX-802AS (RX-80GAS)
	RX-852AS (RX-85GAS)
	RX-822AS (RX-80/85GAS)
	RX-701/711AS (RX-72GAS)
Applicable Solder Dia.	FD-100TA-1.0 : $\phi 0.6-1.0$
	FD-100TA-1.6 : $\phi 1.2-1.6$
Tube Length	1.05m
Weight	60g (w/tube)
Minimum Bend Radius	10cm
Solder Nozzle / Guide Pipe	Sold separately. Please purchase proper size for your solder dia. & soldering iron. (Please refer to table 8, REPLACEMENT PARTS / OPTIONS.)

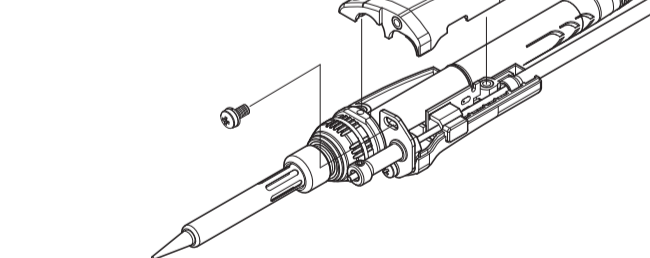
5-2 SETTING TO RX-72GAS

1. Slide the grip rubber in the direction of the arrow.
2. Remove three screws (shown below) and open the grip housing.



NOTE The **RX-72GAS** rubber can't be taken off. You must slide it out of the way.

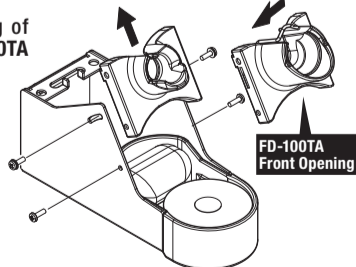
3. Place the **RX-72GAS** as shown below. Put back the grip housing and screws.



4. The setting method of the solder nozzle and guide pipe is the same as left.

5-3 HOW TO SET THE FRONT OPENING OF THE IRON STAND

Take off the front opening of **ST-21/27**. Put on the **FD-100TA** front opening instead.



CAUTION Only **ST-21/27** are available. If you have an older soldering iron stand, please buy a new soldering iron stand.
RX-802/852/822AS → **ST-21**
RX-701/711AS → **ST-27**

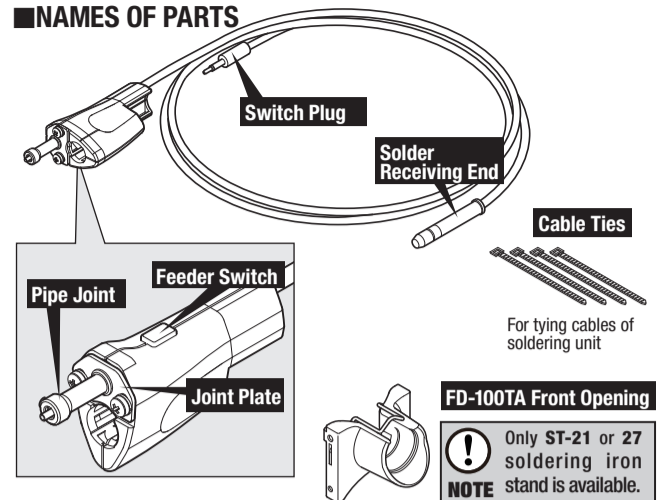
6. HOW TO USE

Push the feeder switch of the **FD-100TA** and feed the solder.
For details, please refer to the **FD-100 OPERATION MANUAL**.

4. PACKAGE CONTENTS / NAMES OF PARTS

PACKAGE CONTENTS ■ **FD-100TA** Tube Assy ■ Cable Ties x 4
■ **FD-100TA** Front Opening ■ Operation Manual

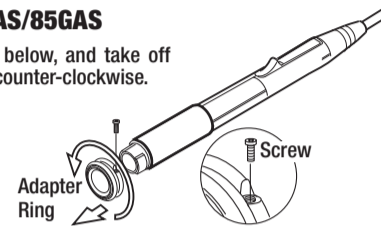
NAMES OF PARTS



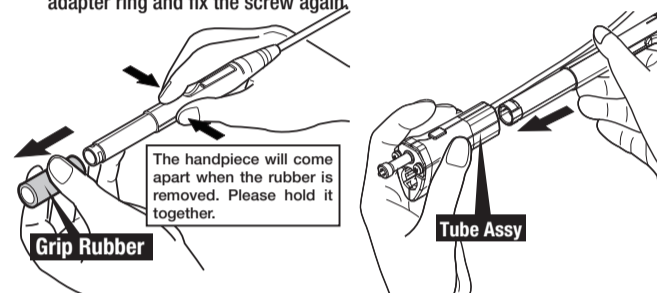
5. SETTING

5-1 SETTING TO RX-80GAS/85GAS

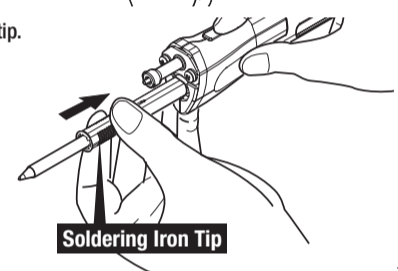
1. Remove the screw shown below, and take off the adapter ring, turning it counter-clockwise.



2. Pull off the grip rubber, and attach the tube assy there. Reassemble the adapter ring and fix the screw again.



3. Attach the soldering iron tip.



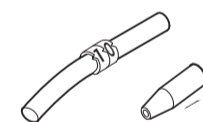
7. MAINTENANCE

Flux blocking-up the nozzle tip may result in solder clogs. If solder clogs occur frequently, disassemble the nozzle/guide pipe and clean inside.

The Teflon tube delivers the solder to the nozzle tip. When clogs/buckling/damages occur in the Teflon tube, please replace it.

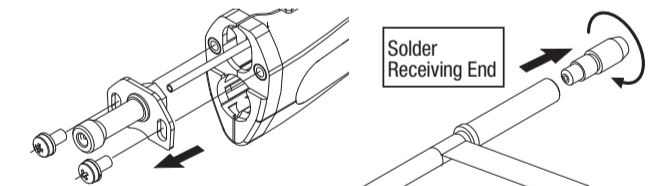
7-1 SOLDER NOZZLE / GUIDE PIPE

Clean any stains and flux residue etc. inside with fine brush or wire. If too badly clogged, please buy new nozzle and pipe.

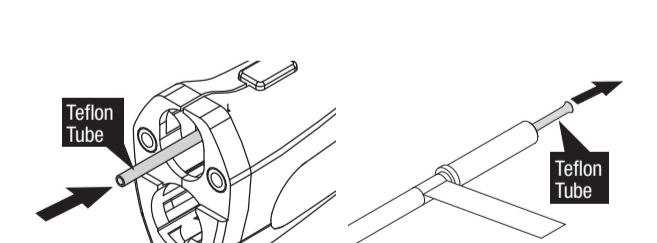


7-2 HOW TO REPLACE THE TEFLON TUBE

1. Remove the screws that hold the joint plate. Then, at the solder receiving end, unscrew the white plastic tip.



2. Push the Teflon tube as shown below. It will come out the other end. Just pinch and pull it out.



3. Reassemble, reversing these steps.

8. REPLACEMENT PARTS / OPTION

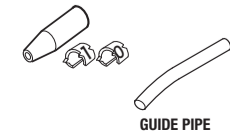
SOLDER NOZZLE

Solder Dia.	Solder Nozzle	Applicable Tube Assy
$\phi 0.6/0.65$	FD-100N-0.6	FD-100TA-1.0
$\phi 0.8$	FD-100N-0.8	
$\phi 1.0$	FD-100N-1.0	
$\phi 1.2$	FD-100N-1.2	FD-100TA-1.6
$\phi 1.6$	FD-100N-1.6	

GUIDE PIPE

Soldering Unit	Guide Pipe
RX-80GAS	FD-100P-80
RX-85GAS	FD-100P-85
RX-72GAS	FD-100P-72

SOLDER NOZZLE



TEFLON TUBE

Tube Assy	Teflon Tube
FD-100TA-1.0	A5010YX00 ($\phi 0.6-1.0$ Solder)
FD-100TA-1.6	A5010YY00 ($\phi 1.2-1.6$ Solder)